



# Dalby Evolution EQ Booth

Spray Booths have evolved...

[www.dalby.co.uk](http://www.dalby.co.uk)

0116 291 6000

[www.dalbydirectfilters.co.uk](http://www.dalbydirectfilters.co.uk)



- Active Energy Saving Technology
- Automatically modulating airflow between 20,000m<sup>3</sup>/hr performance to 10,000m<sup>3</sup>/hr in Economy mode
- “HighLight” high performance LED lighting system
- Hi-visibility Mode Indicator countdown timer
- ‘ProActive’ Touchscreen Control
- Factory built, self contained, air handling plant
- Three day installation
- Energy consumption as low as 1KW\*
- Inverter control
- Rear extract, pit extraction or raised floor airflow options
- Space saving design
- 7m x 4m x 2.5m high spacious Booth cabin
- Extended Height & Length options
- Robust three leaf door
- Large door viewing panels
- Optional white door

• \*When running in economy “ecosave” mode





## Evolutionary Spray Booth Technology



## Designed and Manufactured in the UK

The new Dalby Evolution EQ combination spray booth oven incorporates the very latest technology, providing the optimum paint application environment whilst minimising running costs.

The evolutionary Dalby 'ProActive' touch screen control system constantly monitors the activity within the spray booth and automatically adjusts airflow, temperature and lighting to optimise overspray clearance and bake performance whilst minimising running costs.

Featuring Performance, Smart and Economy modes with inverter controlled automatic pressure balancing, the airflow is automatically controlled to provide power consumption as low as 1KW in Economy mode. This unique technology allows the Booth to offer your business long term cost savings without compromising the quality or performance of your business.

With the high-visibility LED mode indicator and countdown timer display fitted above the 3 leaf large window doors, the Booth operating mode and count down timer is easily visible across any workshop.

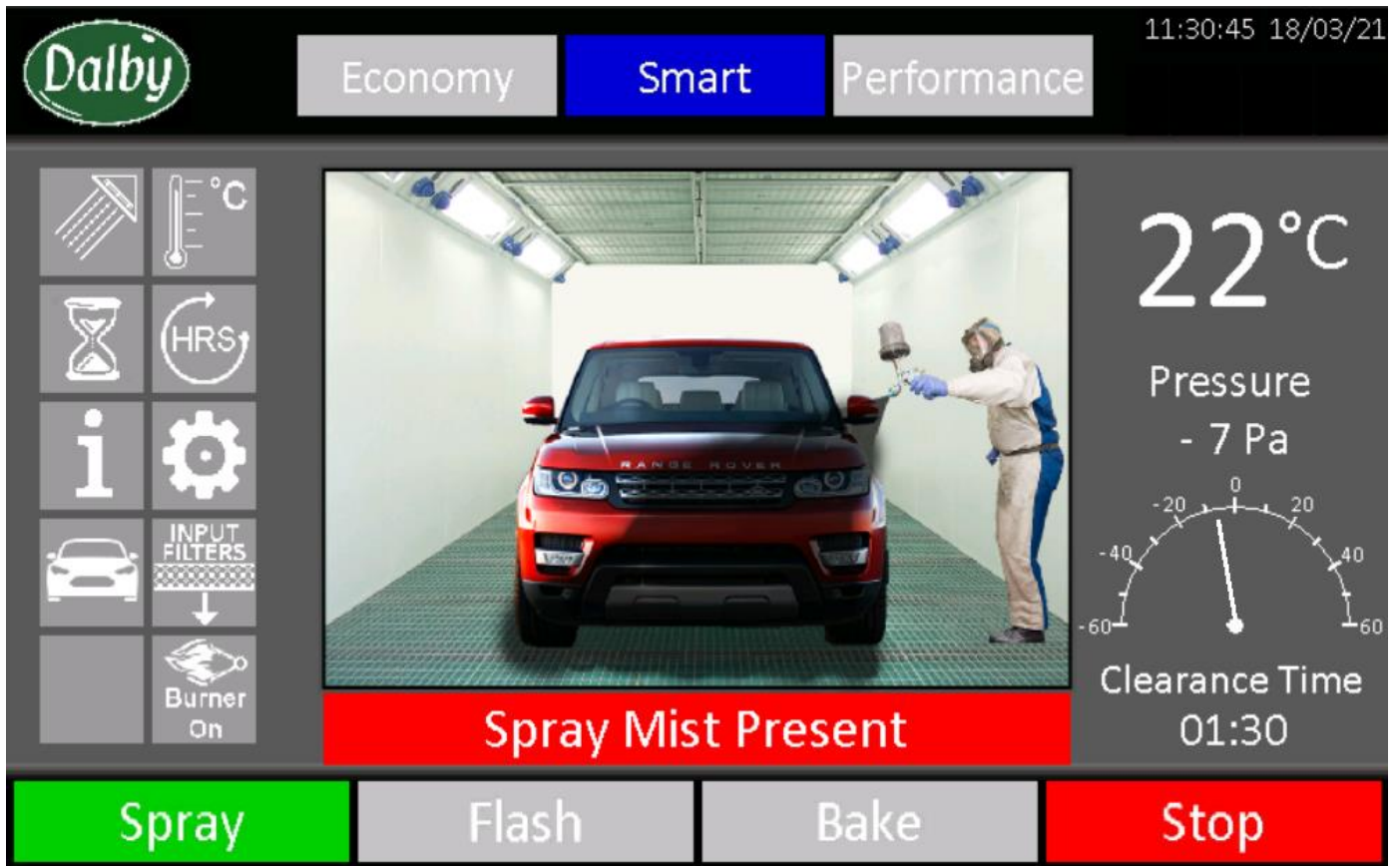
The factory built air handling unit incorporates the fans, dampers and pilotless burner into a single unit, enabling a fast installation and unrivalled levels of reliability.

Maintenance access from within the Booth saves vital workshop space by enabling the booth to be positioned into a corner with no side or rear access required. This space saving design helps maximise usable floorspace.

With rear extraction no pit is required, but the Dalby EQ is also available with downdraft air movement via pit extraction or with an internally ramped raised floor.



## The Dalby 'ProActive' Touch Screen Control System



11:30:45 18/03/21

Economy **Smart** Performance

22°C

Pressure - 7 Pa

Clearance Time 01:30

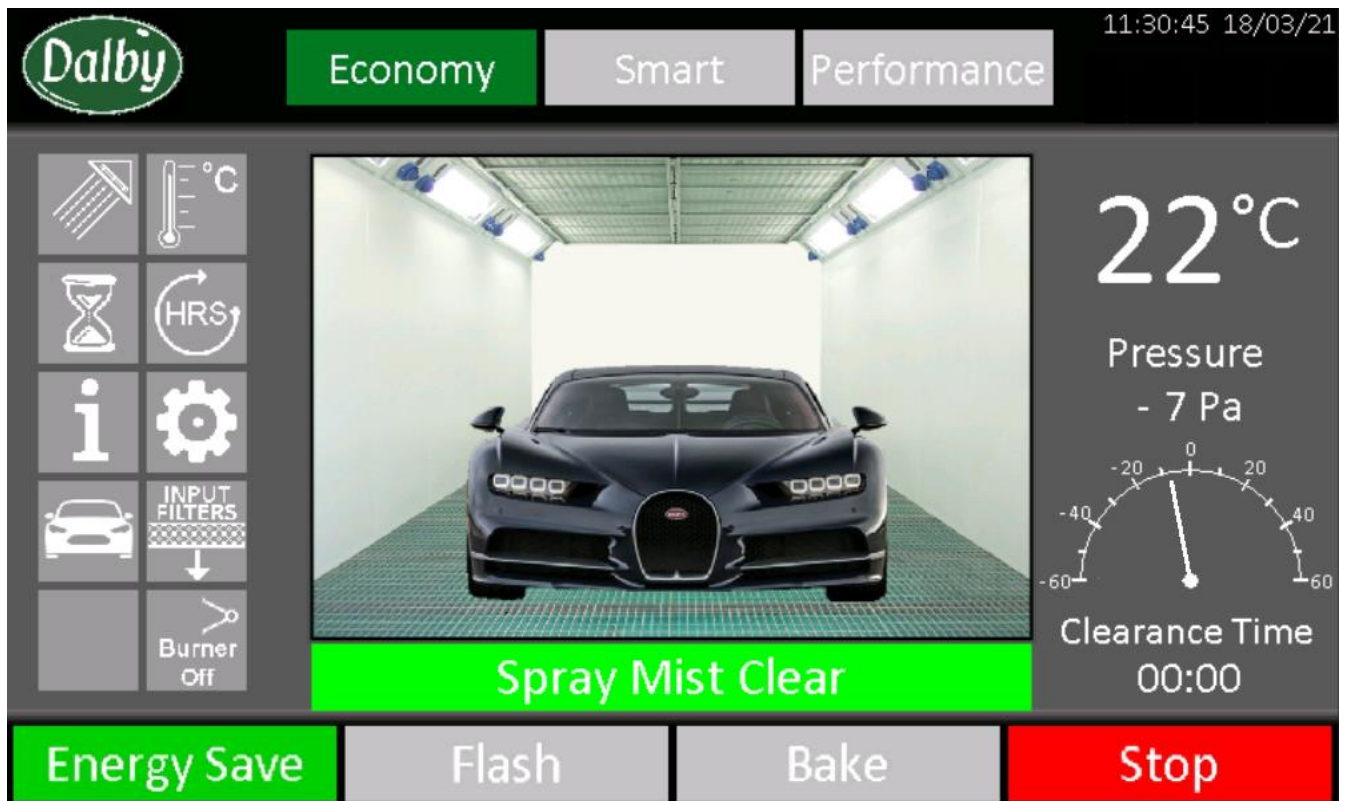
Spray Mist Present

Spray Flash Bake Stop

## ProActive Energy Saving Technology

- The Dalby 'ProActive' touch screen control system enables full control of all the booth's functionality
- SMART mode enables the booth to actively reduce energy consumption without affecting productivity by reducing the airflow when possible, thus reducing electricity and gas consumption.
- 'EcoSave' mode further reduces power and gas consumption with active use of stop/start technology when the Booth is not in use for spraying or curing activities, such as when masking or paint mixing is taking place.
- Automatic pressure balancing- The 'ProActive' control automatically maintains the negative pressure balance in the Booth cabin.
- Integrated Mist Clearance Indicator- When spraying has finished the 'ProActive' control displays the mist clearance time remaining.
- Automatic filter condition monitoring- The control system warns you when the input and extract filters require replacement.
- Maintenance scheduler gives you advance warning of when the next scheduled service is due.
- Fault finding and diagnosis- the 'ProActive' control system provides fault diagnosis information in the event of a breakdown.
- Select from a library of car images to display inside the Booth.

# Economy without compromise



## Innovation through design

The new Dalby “ProActive” Touchscreen control system offers the user full control over the operation of the Booth allowing you to choose the performance level that best suits the demands of your business.

**Performance mode** – Maximum 20,000 m<sup>3</sup> /hr airflow in all operating modes except in ‘EcoSave’.

**Economy mode** – 50% airflow in all modes which uses less than 1KW of fan power.

**Smart mode** - Automatically modulating airflow. Maximum airflow when consuming compressed air and 50% airflow at all other times. Modulating airflow in Bake and Flash off modes to minimise running costs without compromising productivity and providing a typical 40% energy saving.

**EcoSave mode- Automatic stop/start technology-** When no activity is detecting inside the Booth, it automatically reduces the airflow by 50%, switches into recirculation mode and turns off the lights, reducing electricity and gas consumption to less than 1 KW. If no further activity is detected, the Booth switches itself off, reducing power consumption to virtually zero. When activity is detected, the Booth instantly restarts ready for spraying to commence.

Get in touch  
for more information

[www.dalby.co.uk](http://www.dalby.co.uk)  
[www.dalbydirectfilters.co.uk](http://www.dalbydirectfilters.co.uk)

**E** [enquiries@dalby.co.uk](mailto:enquiries@dalby.co.uk)  
**T** 0116 291 6000

## Economy at a glance



### High-visibility LED Status Bar

The high level and high visibility status bar is easily visible across any workshop, allowing the user to monitor the mode and time remaining. With the ever increasing need to improve both productivity and profitability, the integrated status bar helps the user to reduce the downtime created when changing from one process to another.

- **Spray**- Green Status bar indicates Spray is in operation. Flashing Red with countdown timer indicates mist clearance is taking place.
- **Flash off** - Blue Status bar indicates Flash off mode is in operation and countdown shows cycle time remaining.
- **Bake** – Amber Status bar indicates Bake mode is in operation and countdown shows the cycle time remaining. The amber light will then flash at the end of the cycle, indicating the cooling down cycle time remaining.
- **Mist Clearance indicator**- When spraying stops the full width LED indicator bar shows the time remaining before entering the Booth.
- **EcoSave**- When no activity is taking place, the flashing green indicator bar shows you the Pro-Active control system is saving energy.

Get in touch  
for more information

[www.dalby.co.uk](http://www.dalby.co.uk)  
[www.dalbydirectfilters.co.uk](http://www.dalbydirectfilters.co.uk)

**E** [enquiries@dalby.co.uk](mailto:enquiries@dalby.co.uk)  
**T** 0116 291 6000

## “HighLight” LED Lighting System with PIR Control



The Dalby “HighLight” LED lighting system significantly reduces power consumption, with typical power savings in excess of 60%.

The “HighLight” LED light boxes are mounted at corner roof level and shine through our unique, laser cut, highly efficient light shaping diffuser to provide diffused light inside the Booth, replicating daylight, so that operatives do not see the individual LEDs with associated 'spotting' on the retina.

With average light levels at the spraying face in excess of 1400 lux and with excellent colour rendering, the “HighLight” LED lighting creates an optimally lit spraying environment.

With heat control designed into the light, the “HighLight” LED lighting has a much greater life span than traditional fluorescent lighting leading to very low on going maintenance costs and minimal reduction in light output.

PIR control saves energy by ensuring that the lights dim and then turn off when no movement is detected in the Booth cabin, and instantly turn on when an operative enters the Booth.

Get in touch  
**for more information**

[www.dalby.co.uk](http://www.dalby.co.uk)  
[www.dalbydirectfilters.co.uk](http://www.dalbydirectfilters.co.uk)

**E** [enquiries@dalby.co.uk](mailto:enquiries@dalby.co.uk)  
**T** 0116 291 6000

## Dalby “EQ” Evolving around your business



**Space Saving Design** – All working environments need to maximise the working space and create a good working flow. The Dalby EQ Booth has been designed with this in mind which is why all major components can be easily accessed from inside. This allows the Spray Booth to be positioned flush to any side or rear wall, saving much needed floor space within a body shop.

**Optional AQUA-DRY Technology** - The Dalby Advanced Aqua-Dry is a cost effective way to reduce paint process times.

**Optional white doors** - allowing you to match up to existing Booths and paint mixing rooms.

**Optional side mounted viewing panels** – Additional viewing panels can be installed within the side walls helping with staff supervision, Health & Safety or lone worker policies.

**Optional Pit or Raised Floor options** – Choose the option that best fits your building layout as well as your preferred paint process . This flexible design helps make time consuming and expensive pit excavation unnecessary.

**Optional Ramp Design for Raised Floor** – Choose between internal or external ramps.

Get in touch  
for more information

[www.dalby.co.uk](http://www.dalby.co.uk)  
[www.dalbydirectfilters.co.uk](http://www.dalbydirectfilters.co.uk)

**E** [enquiries@dalby.co.uk](mailto:enquiries@dalby.co.uk)  
**T** 0116 291 6000



# Extended warranty available with Dalby's comprehensive service packages including servicing, breakdown cover, filter media and legislative testing



## Providing UK built, high quality paint spray booth facilities to some of the countries largest organisations

- Royal Air Force
- BAE Systems
- Jaguar Landrover
- Bentley Motors
- Aston Martin
- Rolls Royce
- Thales Underwater Systems
- Safran Landing Systems
- MBDA Missile Systems
- Leonardo Aerospace
- British Airways
- Alstom
- Arnold Clarke
- Stage Coach
- South West Trains
- Princess Yachts
- Bombardier Shorts PLC
- Transport for London
- Caterpillar
- JCB Excavators
- PPG
- Royal Mail Fleet Services
- Gefco
- Aim Aviation
- BE Engineering
- Devonport Docks
- Cobham Mission Systems
- Meggitt Aerospace
- Komatsu UK Ltd
- US Air Force
- Akzo Nobel
- Eddie Stobart
- Bulkhaul
- SDC Trailers
- H&S Trailers
- Hitachi Rail
- Bombardier Transport
- Translink Ireland
- SlurryKat
- Dennison Trailers
- Lockheed Martin
- Renault F1
- Drive Vauxhall
- UK Carbody

